



## FLASH WIRELESS iPHONE 7 CHARGE CASE



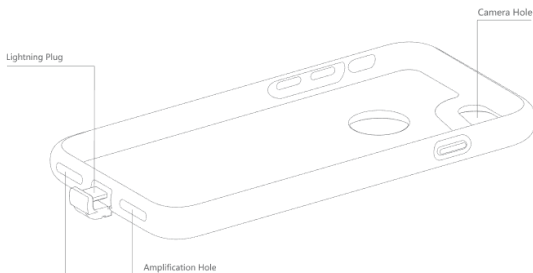
Thank you for purchasing this Merlin Product. Please read the instruction manual carefully before using the product.

The documentation provided will allow you to fully enjoy all the features this unit has to offer.

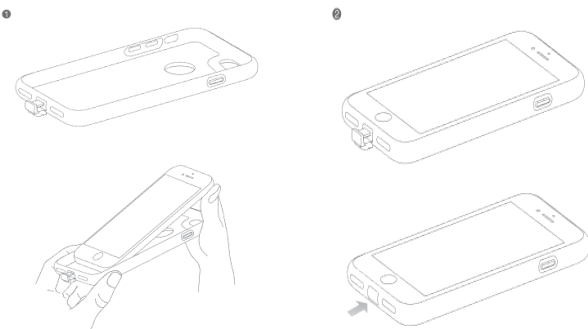
Please save this manual for future reference.

### Instructions

A wireless charging case designed especially for your iPhone 7.

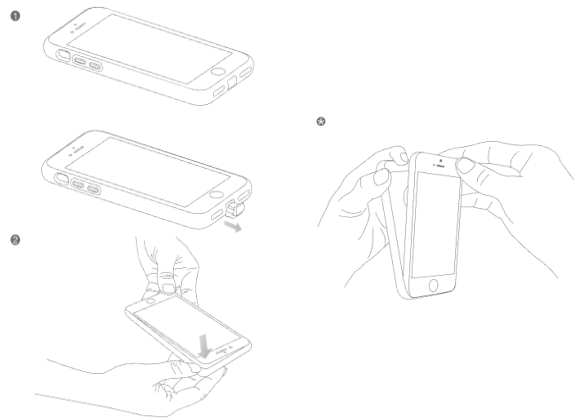


### **Placing your iPhone 7 into the case:**



- Pull out the lightning plug from the wireless charging receiver case
- Install the phone into the case
- Insert the lightning plug into the phone's charging port

### **Removing your iPhone 7 from the charge case:**



- Pull out the lightning plug
- Remove the phone from the wireless charging receiver case

### **Note:**

It is wrong to remove the phone from the case without pulling out the lightning plug first.

### FAQ

#### **Q) Why is my device not charging?**

A) Make sure the phone has been properly placed and the lightning plug is inserted

#### **Q) What other phone models are compatible with this charge case?**

A) iPhone 6, 6S, 7.

### Maintenance

1. Retain these instructions for future use.
2. Clean the product with a damp cloth and mild soap.
3. Do not expose this product to rain or moisture.
4. Be careful not to turn or twist the cables used in this product too much as it can lead to malfunction and failure.
5. This product is not designed to be submerged in water and will malfunction if this occurs.
6. This product has no user serviceable items inside. Do not open this product as the user risk injury and would void the warranty.
7. Keep unit away from strong magnetic fields to avoid interference with the product.



### LIMITED WARRANTY

Merlin Products are covered by a limited one-year warranty policy. If the product suffers from a manufacturing defect, the customer will receive a replacement if claimed within 15 days of the purchase date. Otherwise, the product will be inspected for possible repair options. The product will either be repaired and returned free of charge, or replaced. All repair services past the one-year warranty period will be charged for any repairs that need to be made.

If the client is located outside the UAE, or is otherwise unable to personally deliver the defective product to our service center or retail outlets, he/she may send it via post at his/her own cost. The repaired/replaced product will then be returned to the client via courier mail at Merlin's cost, as long as the warranty period is still active.

Important: This limited warranty DOES NOT COVER normal wear and tear, accidents, damage during transit, misuse, abuse or neglect. Attempting to disassemble the unit will render the warranty null and void.

REGISTER  
NOW

We hope you enjoy the quality of Merlin Digital product.

Please take out a few minutes to register your product at [merlin-digital.com/register](http://merlin-digital.com/register) to avail:

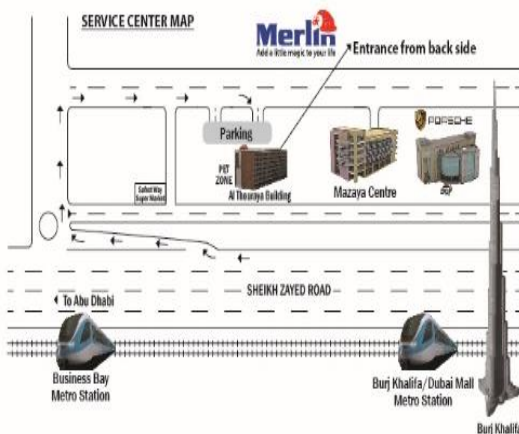
- Special discounts and promotions on other Merlin products
- Exclusive information on new products and innovations
- Reminders about product firmware downloads, updates and upgrades
- Competitions and exciting giveaways

To learn more about Merlin products visit our site at: [www-merlin-digital.com](http://www-merlin-digital.com) or like our Facebook page on [facebook.com/merlin.digital.gadgets](https://facebook.com/merlin.digital.gadgets)

For enquiries and information call our toll free number 800-MERLIN (Sat-Thu, 9 am - 6 pm)

Contact our support staff for troubleshooting and any other enquiries relating to your Merlin product by sending an email at [support@merlin-digital.com](mailto:support@merlin-digital.com) and your issue will be resolved within 48 hours.

REGISTER  
for exclusive  
product releases  
and future  
prize drawings!



For a complete list of our worldwide locations,  
visit <http://merlin-digital.com/contacts>