



AirMount

Mount Smarter, Drive Safer



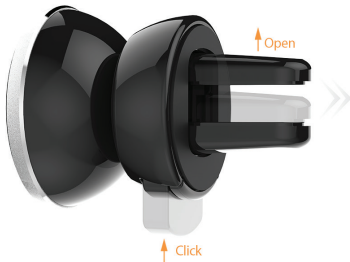
Thank you for purchasing this Merlin Product. Please read the instruction manual carefully before using the product.

The documentation provided will allow you to fully enjoy all the features this unit has to offer.

Please save this manual for future reference.

Instructions

- 1) Clean the back of your smartphone to remove any lint or dust.
- 2) Remove the cover off the 3M adhesive tape from the back of the magnetic disc.
- 3) Attach the magnetic disc to the back of your smartphone in the center.
- 4) Press and hold AirMount's lock mechanism and attach it to one of the flaps of your car's air vent.



- 5) Place your smartphone on AirMount and rotate to position it in the desired direction.
- 6) To use AirMount with your phone's cover, attach the included metallic plate either on the outside of the cover or in between the phone and the cover.

Maintenance

- 1) Do not pour water or other liquids on the device.
- 2) The device does not have any user-serviceable parts. Do not try to disassemble.

FAQ

- Q) AirMount does not stay in place?
A) Make sure that the Lock & Release button is fastened.
- Q) Can I use any size device?
A) AirMount can hold most types of smartphones.

LIMITED WARRANTY

Merlin Products are covered by a limited one-year warranty policy. If the product suffers from a manufacturing defect, the customer will receive a replacement if claimed within 15 days of the purchase date. Otherwise, the product will be inspected for possible repair options. The product will either be repaired and returned free of charge, or replaced. All repair services past the one-year warranty period will be charged for any repairs that need to be made.

If the client is located outside the UAE, or is otherwise unable to personally deliver the defective product to our service center or retail outlets, he/she may send it via post at his/her own cost. The repaired/replaced product will then be returned to the client via courier mail at Merlin's cost, as long as the warranty period is still active.

Important: This limited warranty DOES NOT COVER normal wear and tear, accidents, damage during transit, misuse, abuse or neglect. Attempting to disassemble the unit will render the warranty null and void.

REGISTER NOW

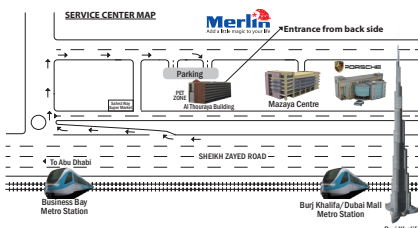
We hope you enjoy the quality of Merlin Digital product. Please take out a few minutes to register your product at merlin-digital.com/register to avail:

- Special discounts and promotions on other Merlin products
- Exclusive information on new products and innovations
- Reminders about product firmware downloads, updates and upgrades
- Competitions and exciting giveaways

To learn more about Merlin products visit our site at: www-merlin-digital.com or like our Facebook page on facebook.com/merlin.digital.gadgets
For enquiries and information call our toll free number **800-MERLIN** (Sat-Thu, 9 am - 6 pm)

Contact our support staff for troubleshooting and any other enquiries relating to your Merlin product by sending an email at support@merlin-digital.com and your issue will be resolved within 48 hours.

REGISTER
for exclusive
product releases
and future
prize drawings!



For a complete list of our worldwide locations, visit <http://merlin-digital.com/contacts>